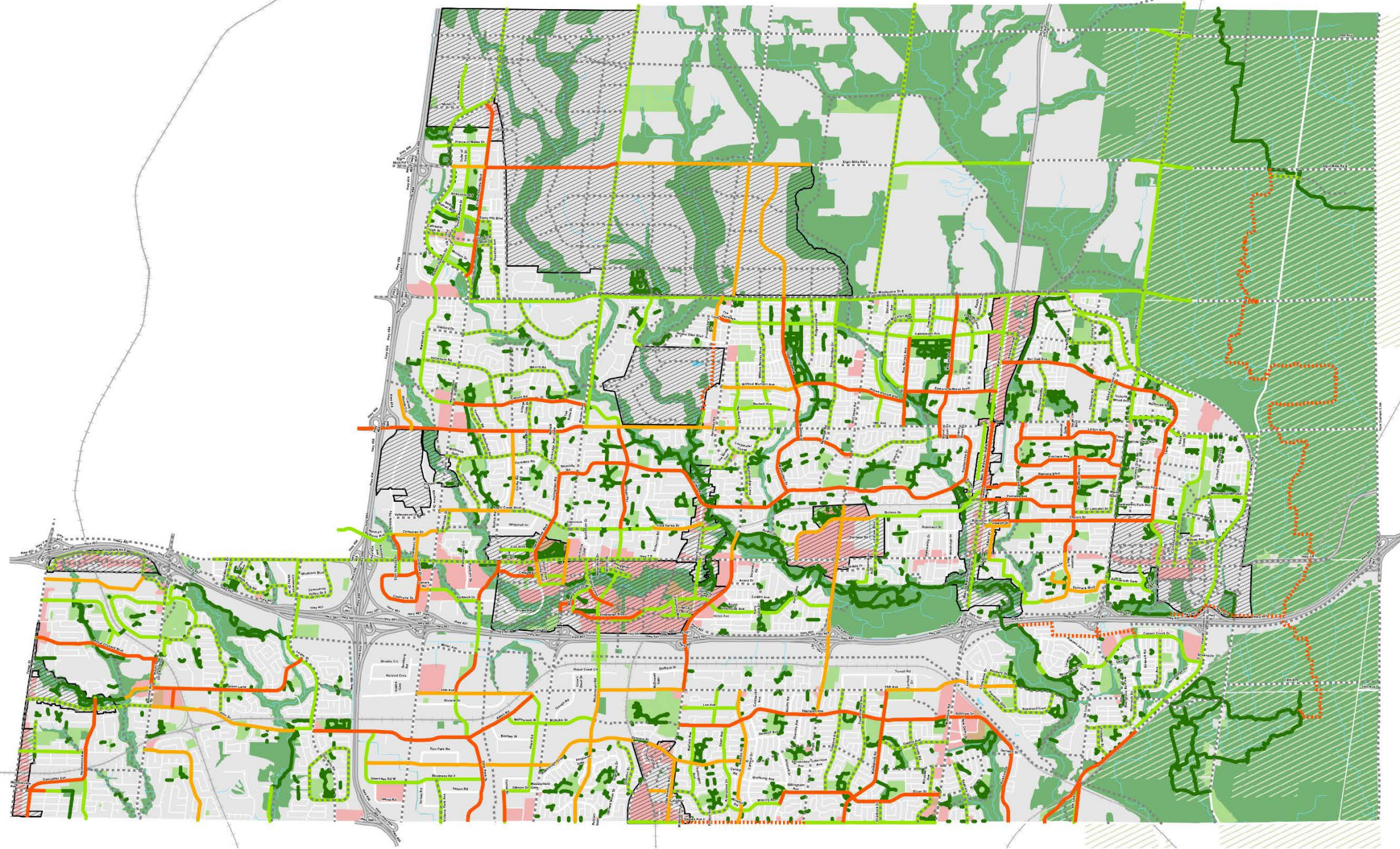


# Appendix A: Network Maps

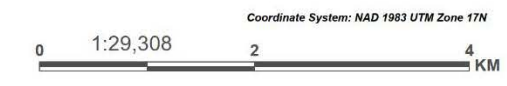
---



# Active Transportation 10-Year Implementation Plan - Draft Phasing

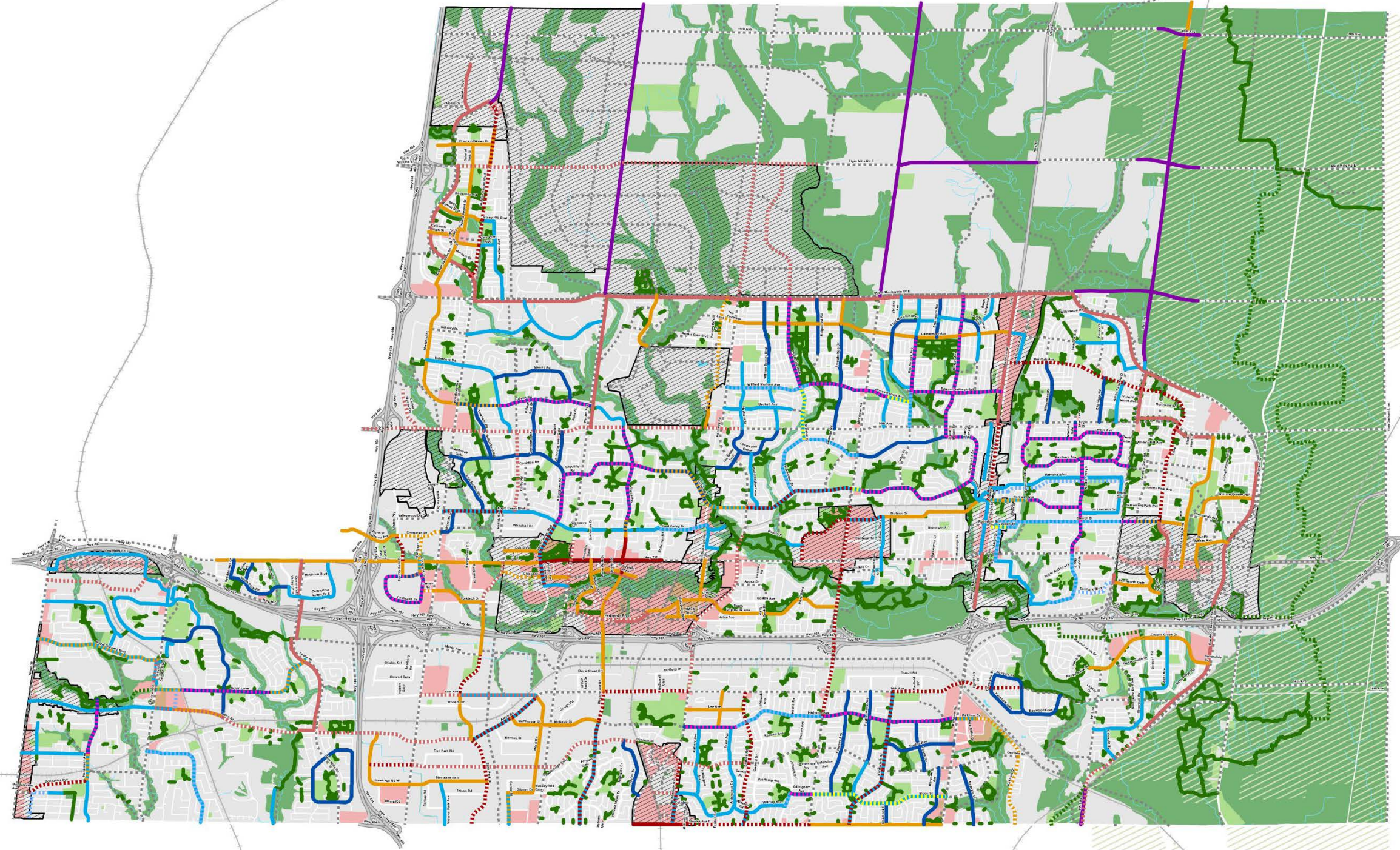


- |  |   |   |  |
|--|---|---|--|
| <p><b>Existing Cycling Network</b></p> <ul style="list-style-type: none"> <li><span style="color: green;">—</span> Existing Cycling Network</li> </ul> <p><b>Proposed Priority Network</b></p> <ul style="list-style-type: none"> <li><span style="color: orange;">—</span> 0-5 Year Priority Network</li> <li><span style="color: orange; font-weight: bold;">- - - -</span> 0-5 Year Priority Network (Built by Others)</li> <li><span style="color: yellow;">—</span> 6-10 Year Priority Network</li> </ul> | <p><b>Ultimate Cycling Network</b></p> <ul style="list-style-type: none"> <li><span style="color: grey;">- - - -</span> Ultimate Cycling Network</li> </ul> | <ul style="list-style-type: none"> <li><span style="border-bottom: 1px solid black; width: 20px; display: inline-block;"></span> Highway / Freeway</li> <li><span style="border-bottom: 1px solid black; width: 20px; display: inline-block; margin-top: 5px;"></span> Rail Line</li> <li><span style="background-color: pink; width: 20px; height: 10px; display: inline-block; margin-top: 5px;"></span> Mixed use and commercial areas</li> <li><span style="border-bottom: 1px dashed black; width: 20px; display: inline-block; margin-top: 5px;"></span> Utility Line</li> <li><span style="border-bottom: 1px solid blue; width: 20px; display: inline-block; margin-top: 5px;"></span> Watercourse</li> <li><span style="background-color: lightgreen; width: 20px; height: 10px; display: inline-block; margin-top: 5px;"></span> Rouge National Urban Park</li> <li><span style="background-color: green; width: 20px; height: 10px; display: inline-block; margin-top: 5px;"></span> Greenway System</li> <li><span style="background-color: lightgreen; width: 20px; height: 10px; display: inline-block; margin-top: 5px;"></span> Park</li> </ul> | <p><span style="border: 1px solid black; width: 15px; height: 10px; display: inline-block; margin-right: 5px;"></span> Secondary Plan Boundaries</p> <p><i>Details of Cycling Network<br/>Subject to Secondary Plans</i></p> |
|--|---|---|--|





# Active Transportation 10-Year Implementation Plan - Draft Facilities



## Existing Cycling Network

- Bike Lane
- Cycle Track
- Boulevard Multi-Use Path
- Paved Shoulder
- Shared Roadway
- Shared Roadway with Urban Shoulder (Edgelines)
- Off-Road Multi-Use Trail

## Proposed Priority Network

- - - - - Edge Line Upgrades
- - - - - Formalize Edge Lines
- - - - - Bike Lane
- - - - - Cycle Track or Protected Bike Lane
- - - - - Boulevard Multi-Use Path
- - - - - Shared Roadway Upgrades
- - - - - Off-Road Multi-Use Trail

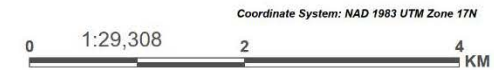
## Ultimate Cycling Network

- - - - - Ultimate Cycling Network

- Highway / Freeway
- Rail Line
- Mixed use and commercial areas
- Utility Line
- Watercourse
- Rouge National Urban Park
- Greenway System
- Park

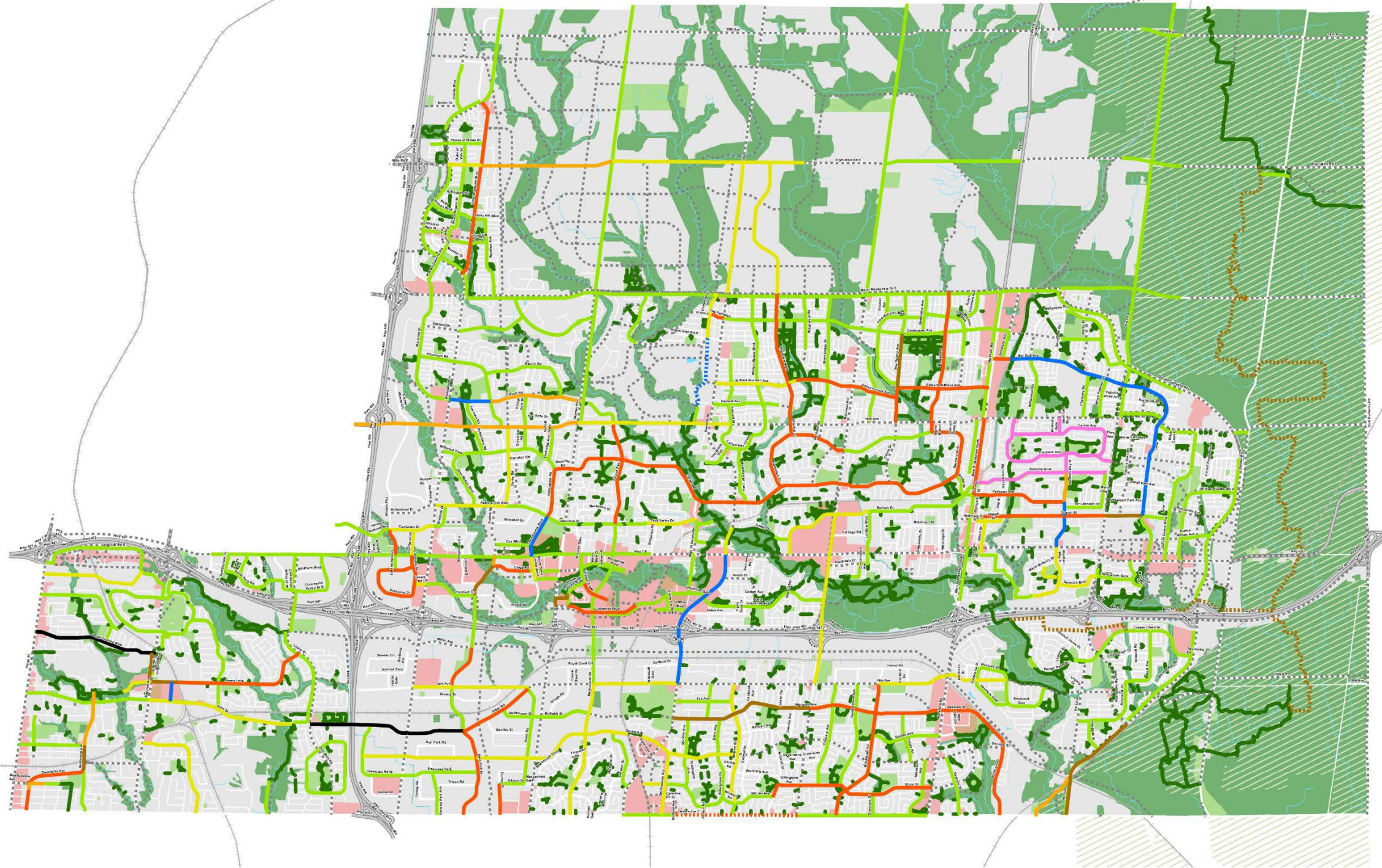
- Secondary Plan Boundaries

Details of Cycling Network Subject to Secondary Plans





# Draft Markham 0-5 Year Cycling Priority Network



**0-5 Year Project Timing**

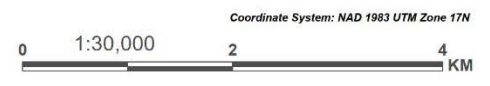
- Currently Underway
- Year 1
- Year 1 (Built by Others)
- Year 2
- Year 3
- Year 3 (Built by Others)
- Year 4
- Year 4 (Built by Others)
- Year 5
- Years 6-10

**Existing Cycling Network**

- Existing Cycling Network
- Ultimate Cycling Network

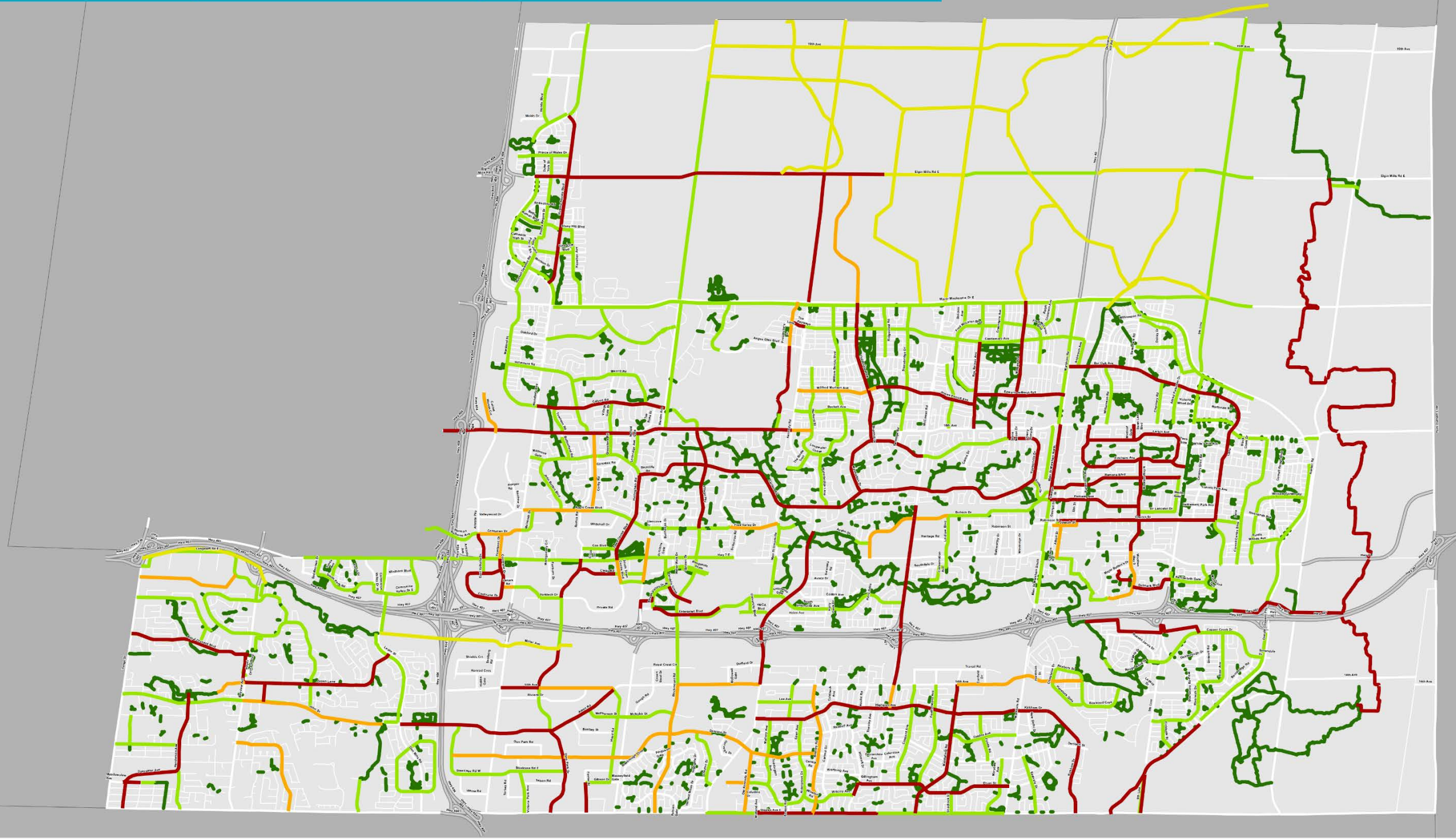
**Other Features**

- Highway / Freeway
- Rail Line
- Mixed use and commercial areas
- Utility Line
- Watercourse
- Rouge National Urban Park
- Greenway System
- Park





# Active Transportation 10-Year Implementation Plan - Scenarios



### Existing Cycling Network

- Existing Cycling Network
- Trail

### Scenarios

- Low Investment Scenario
- Medium Investment Scenario
- High Investment Scenario

