

OFFICIAL PLAN

MAP 3 - LAND USE

as modified and approved by York Region June 12/14
JUNE 2014

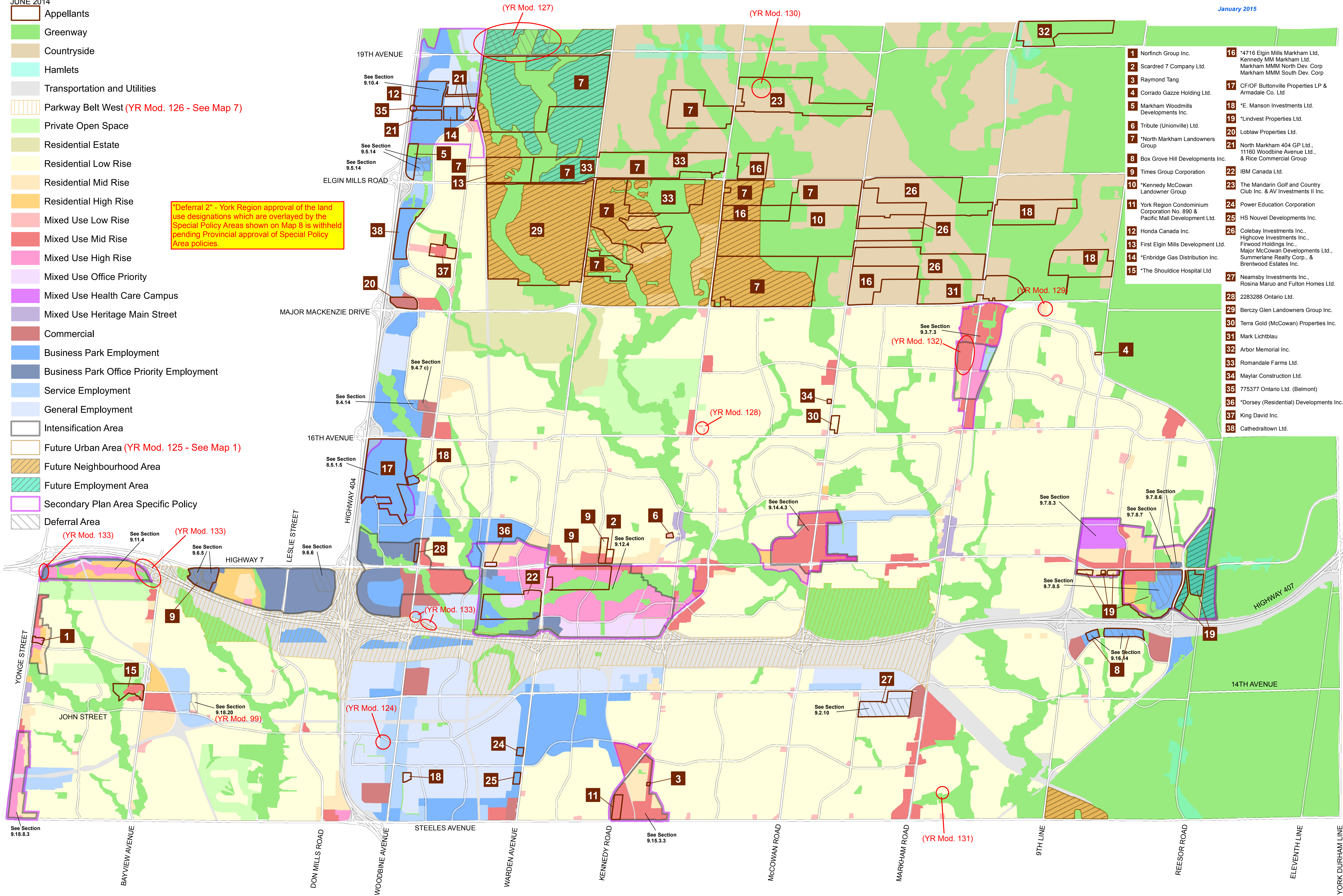
APPEALS OF THE CITY OF MARKHAM OFFICIAL PLAN, PART 1

This is a map of all appeal letters received by the Region of York for reference purposes. The inclusion of a letter on this map is not an admission that all letters received represent valid appeals under the Planning Act.

*Appeal of the entirety of the Official Plan
January 2015

- Appellants
- Greenway
- Countryside
- Hamlets
- Transportation and Utilities
- Parkway Belt West (YR Mod. 126 - See Map 7)
- Private Open Space
- Residential Estate
- Residential Low Rise
- Residential Mid Rise
- Residential High Rise
- Mixed Use Low Rise
- Mixed Use Mid Rise
- Mixed Use High Rise
- Mixed Use Office Priority
- Mixed Use Health Care Campus
- Mixed Use Heritage Main Street
- Commercial
- Business Park Employment
- Business Park Office Priority Employment
- Service Employment
- General Employment
- Intensification Area
- Future Urban Area (YR Mod. 125 - See Map 1)
- Future Neighbourhood Area
- Future Employment Area
- Secondary Plan Area Specific Policy
- Deferral Area

"Deferral 2" - York Region approval of the land use designations which are overlaid by the Special Policy Areas shown on Map 8 is withheld pending Provincial approval of Special Policy Area policies.



- | | |
|--|---|
| 1 Norfinch Group Inc. | 16 *4716 Elgin Mills Markham Ltd., Kennedy MM Markham Ltd., Markham MMM North Dev. Corp Markham MMM South Dev. Corp |
| 2 Scardred 7 Company Ltd. | 17 CF/OF Buttonville Properties LP & Armadale Co. Ltd |
| 3 Raymond Tang | 18 *E. Manson Investments Ltd. |
| 4 Corrado Gazzo Holding Ltd. | 19 *Lindvest Properties Ltd. |
| 5 Markham Woodmills Developments Inc. | 20 Loblaw Properties Ltd. |
| 6 Tribute (Unionville) Ltd. | 21 North Markham 404 GP Ltd., 11160 Woodbine Avenue Ltd., & Rice Commercial Group |
| 7 *North Markham Landowners Group | 22 IBM Canada Ltd. |
| 8 Box Grove Hill Developments Inc. | 23 The Mandarin Golf and Country Club Inc. & AV Investments II Inc. |
| 9 Times Group Corporation | 24 Power Education Corporation |
| 10 *Kennedy McCowan Landowner Group | 25 HS Nouvel Developments Inc. |
| 11 York Region Condominium Corporation No. 890 & Pacific Mall Development Ltd. | 26 Colebay Investments Inc., Highcove Investments Inc., Firwood Holdings Inc., Major McCowan Developments Ltd., Summerlane Realty Corp., & Brentwood Estates Inc. |
| 12 Honda Canada Inc. | 27 Neamsby Investments Inc., Rosina Maruo and Fulton Homes Ltd. |
| 13 First Elgin Mills Development Ltd. | 28 2283288 Ontario Ltd. |
| 14 *Enbridge Gas Distribution Inc. | 29 Berczy Glen Landowners Group Inc. |
| 15 *The Shouldice Hospital Ltd | 30 Terra Gold (McCowan) Properties Inc. |
| | 31 Mark Lichtblau |
| | 32 Arbor Memorial Inc. |
| | 33 Romandale Farms Ltd. |
| | 34 Maylar Construction Ltd. |
| | 35 775377 Ontario Ltd. (Belmont) |
| | 36 *Dorsey (Residential) Developments Inc. |
| | 37 King David Inc. |
| | 38 Cathedraltown Ltd. |