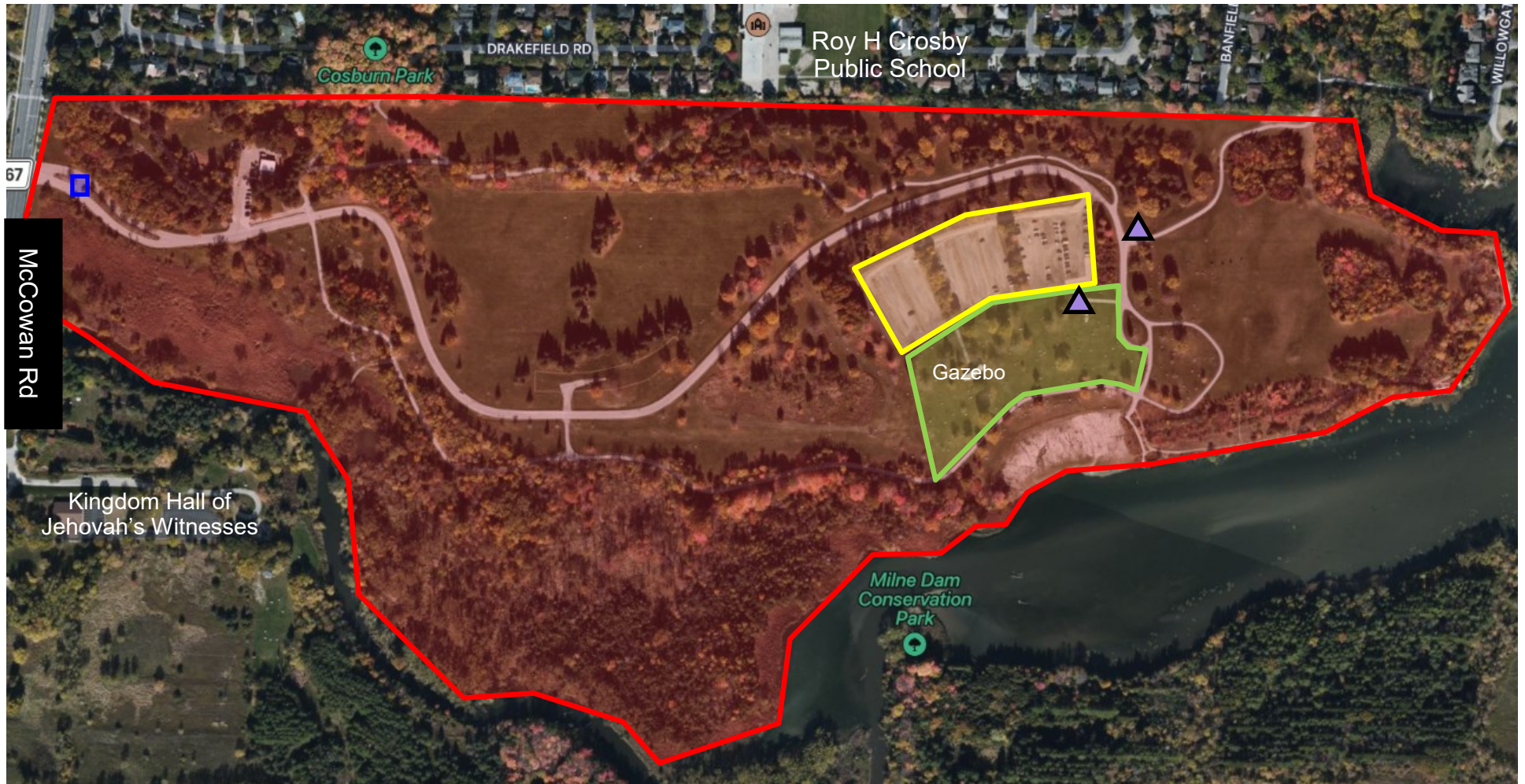


# Milne Dam Conservation Park - Site Map User Guide

8251 McCowan Rd, Markham, ON L3P 3J3



## Legend

Permitted Event Area



Public Parking



Restricted  
(Not for Event use)



Washroom and  
Port-O-Lets



Entrance



**Milne Dam Conservation Park - Site Map User Guide**  
**8251 McCowan Rd, Markham, ON L3P 3J3**



**Legend**

Permitted Event Area



Public Parking



Washroom and Port-O-Lets



10 x 10 Tent Booths



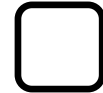
Food Truck Area



Reserved for Accessible parking (6 spots)



Gazebo



Picnic Tables



## **Milne Dam Conservation Park - Site Map User Guide**

### **8251 McCowan Rd, Markham, ON L3P 3J3**

Location: 8251 McCowan Rd, Markham, ON L3P 3J3

Park Hours: 9 AM to Dusk

Maximum Park Occupancy: 500

Available Parking: 380

Accessible Parking: 6

Available Washrooms:

- Permanent washroom
- Port-O-Lets

Waste Disposal:

- Garbage
- Recycling
- Charcoal

Amenities:

- Gazebo
- Picnic Tables

Permitted Activities:

- Performances (under pre existing Gazebos/Shaded Structures)
- Amplified Sound (Noise Exemption Permit may be required)
- Power Generator (Maximum 2,200 W/18.3 A)
- Food Vendor/Truck (must be located in the parking lot and free to all event attendees)
- Tents (10 x 10, must be weighted, no staking)