

APPENDICES

APPENDIX I

EXPLANATION TO LIST OF BUILDING CLASSIFICATION

VINEGAR HILL	:	LIST OF BUILDINGS
	:	MAP OF SUB-DISTRICT
MARKHAM VILLAGE	:	LIST OF BUILDINGS
	:	MAP OF SUB-DISTRICT
MOUNT JOY	:	LIST OF BUILDINGS
	:	MAP OF SUB-DISTRICT

See revised **Building Classifications**
Revised by Council-January 2006
(attached)

MARKHAM VILLAGE
HERITAGE CONSERVATION
DISTRICT PLAN

Revised Building Classifications

*To be used with the Markham Village
Heritage Conservation District Plan, 1991*

Approved by Council
January 17, 2006

Please note that these building classifications replace those in the
Markham Heritage Conservation District Plan, 1991



RESOLUTION OF COUNCIL MEETING NO. 2 DATED JANUARY 17, 2006

REPORT NO. 4 – DEVELOPMENT SERVICES COMMITTEE

**(4) REVISED BUILDING CLASSIFICATION
MARKHAM VILLAGE HERITAGE CONSERVATION DISTRICT (16.11)**

That the report titled “Revised Building Classification, Markham Village Heritage Conservation District” be received;

And that the Markham Village Heritage Conservation District Plan be amended by deleting the 1991 building classifications and replacing them with the 2005 building classifications as recommended by Heritage Markham (Appendix ‘B’).

A handwritten signature in cursive script that reads "Sheila Birrell".

Sheila Birrell
Town Clerk

Copy to: Jim Baird, Commissioner of Development Services
Valerie Shuttleworth, Director of Planning and Urban Design
George Duncan, Senior Heritage Planner

MARKHAM VILLAGE HERITAGE CONSERVATION DISTRICT

Updated Building Classification – 2005

Vinegar Hill Area

Dryden Court

4 C
6 C
8 C
10 B
12 C
16 C
18 C

Fisher Court

2 A
4 C

James Scott Road

58 – 88 B

Main Street South

53 A Part IV
55 C
70 C
72 C
74 C
78 C
79 C
80 C
81 C
82 C
84 C
88 A
89 A

Mayhew Lane

1 C
3 C

Mill Street

14 C
16 C
17 A
20 C
22 C

James Walker Court

1 B 65 B
3 B 67 B
5 B 69 B
7 B
9 B
11 B
13 B
15 B
17 C
19 C
21 C
23 B
29 A
33 B
35 B
37 B
39 B
41 B
43 B
45 B
47 B
49 B
51 B
53 B
55 B
57 B
59 B
61 B
63 B

Nelson Street

40 C
52 C
56 C
58 C
60 C
62 C

Princess Street

2 B
6 C
11 C
17 C
18 B
19 C
20 C
21 C
22 C
23 C
25 C
27 C

Rouge Street

1 C
2 C
3 B
4 C
5 C
6 B
7 C
9 C
10 C
12 C
15 B
16 C
18 C
19 B
20 C

Vinegar Hill Area, cont'd

Rouge Street, cont'd

21	C	59	C
22	C	60	C
23A	A	61	A
23	B	63	B
24	C		
25	B		
26	C		
27	B		
28	C		
29	B		
30	C		
30B	C		
31	B		
32	A		
33	B		
34A	C		
34B	C		
35	B		
36	B		
37	B		
38	C		
39	B		
40	C		
41	C		
43	C		
44	C		
45	C		
46	C		
47	C		
48	C		
49	C		
50	B		
51	C		
52	C		
53	B		
54	C		
55	C		
56	C		
57	C		
58	C		

Rougehaven Way

33	A
----	---

MARKHAM VILLAGE HERITAGE CONSERVATION DISTRICT

Updated Building Classification – 2005

Markham Village Area

Albert Street

6-8 C
 9 B
 10 C
 11 A
 12-14 C
 15 B
 16 A Part IV
 19 B
 25 B
 26 A
 29 A
 30 A
 32-38 B
 33 B
 35 C
 40 A
 41 A
 42-44 A
 43 B
 46 B
 48 B
 52 C
 53 A
 55 A

Bullock Drive

15-37 B
 20 B
 22 B

Centre Street

8 A
 10-12 A

Church Street

10 B
 11-13 A
 12 A
 14 B

Church St. cont'd

16 A
 23 B
 24 A
 27 B
 28 B
 31 B
 32 A
 35 A
 36 A
 37 C
 38 C
 40 C
 41 C
 43 A
 44 A 45 A
 48 A
 49 B
 51 C
 52 A
 53 A
 56 C
 57 B
 60 A
 61 C
 63 B
 64 A

Edward Street

23 B

Elm Street

22 C

Franklin Street

1 C
 3 A
 6 A
 10-14 C
 15 A

Franklin St. cont'd

16-18 C
 20-22 C
 21 A
 24 C

George Street

1 A
 5 A
 12 B
 14 A
 15 A
 16 A
 19 A
 20-22 A
 34 C
 36 C
 40 B
 42 B
 44 C
 48 C
 50 C

Highway 7

5954-5956 C
 6030 C
 6040 A Part IV
 6050 C
 6060 C
 6070 C
 6080 C

Houghton Blvd.

2 A

Dublin Street

14 C

Markham Village, continued

<u>Main Street North, cont'd</u>		<u>Robinson Street</u>		<u>Washington St.cont'd</u>	
190	A	105	C	39	C
194	A	107	C	40	C
195	B	109	C	41	C
196	A	111	C	43	C
201	B	117	B	47	A
202	A	118	C	48	A
209	B	119	B		
214-216	A Part IV	120	A	<u>Water Street</u>	
219	B	121	B	6-8	A
		132-138	B	10-12	A
<u>Maple Street</u>		<u>St. Goran Crescent</u>		<u>Wilson Street</u>	
16	B	1	B	12	A
17	C	5	C	15-21	A
30	C	7	C	23	B
41	A	9	C	23a	B
				25	B
<u>Markham Street</u>		<u>Station Street</u>			
1	C	15	A	25a	B
12	B	26	A	27	A
16	B			29	C
20	A			30	A
22	C				
24	C				
26	C				
28	C				
<u>Marmill Way</u>		<u>Thomson Court</u>			
2-49	B	1	B		
<u>Orchard Street</u>		<u>Washington Street</u>			
1	A Part IV	2-8	C		
		5	C		
		7	B		
		10	A		
		15-17	C		
		21	A		
		23	B		
		25a	B		
		25-27	A		
		29	B		
		30	B		
		32	A		
		33	C		
		35	C		
		36	A		
<u>Parkway Avenue</u>					
19	C				
27	A				
<u>Ramona Boulevard</u>					
14	A				

MARKHAM VILLAGE HERITAGE CONSERVATION DISTRICT

Updated Building Classification - 2005

Mount Joy Area

Beech Street

1 B
3 C
5 C
8 C
10 C

David Street

7 B
9 B
12 A
14 C

Gleason Avenue

14 C
16 C

Main Street North

227 B
230 A
232 B
234 B
236 B
238 A
240 B
241 C
244 A
248 A
249 A
250 A
251 C
253 A
257 B
258 A
261 A
262 A
265 C
266 A Part IV
268 A

Main St. N. cont'd

269 A
272 A
275 B
276 A
280 A
283 A
284 B
287 C
288 A
292 A
295 A
296 B
299 B
300 A
303 A
304 A
307 A
309 A
310 C
313 A
314 A
318 B
322 A Part IV
323 A
326 A
327 A
328 C
329 A
331 C
332 A
335 B
336 B
337 C
339 B
340 A
346 B
347 C
348 C

Main St. N. cont'd

352 C
354 A
356 C
357 A
358 B
361 A
362 A
365 A
366 C
369 C
370 A
373 A
374 C
377 C
380 B
381 B

Peter Street

1 A
2 A
4 A
5 C
6 A
7 B
8 A
9 A
10 A
11 C
12 A
13 B
14 B
15 B
16 A
17 A
19 A
20 A Part IV
23 A
24 A

Mount Joy Area, cont'd

Peter Street, cont'd

25 B
26 C
27 A
28 C
29 A
30 A
31 A
32 A
33 A
34 C
35 C
36 A
37 B
38 C
40 B
42 B
45 A

Wales Avenue

24 B
25 B
26 B
27 A
28 A
29 A
30 A
31 B
33 B
34 A
35 A

Old Sixteenth Avenue

5999 C

Sixteenth Avenue

5970 B
5990 B

APPENDIX I

Computer list headings:

- (1) Index No: This number has been adopted from the Heritage Markham inventory for cross-reference purposes;
- (2) Address: This represents the street and number on the building;
- (3) Date: Indicates the approximate or accurate date of the building construction;
- (4) Building Type:
i.e. indicates the type of structure
H= house I= industry
C= cottage W= roadway
S= school L= residential/commercial
T= hotel M= commercial
R= church O= government or town;

- (5) Building type: refers to the building style as follows

Beaux Arts Features	BA	1
Boomtown Front	BF	2
Provincial Georgian	GE	5
Gothic Revival	GO	6
Italianate	I	7
Ontario Farmhouse	OF	8
Ontario Vernacular	OV	9
Picturesque	P	10
Queen Anne Revival	QA	11
Regency	RE	12
Regency Modified	REM	13
Second Empire	SE	14
Victorian	V	15
Victorian High	VH	16
Victorian Late	VL	17
Double House	DO	
Triplex	T	
Row House	I	

Note: Buildings may have any combination of the styles and features listed above, i.e. Ontario Vernacular house with Classical Revival and Italianate features = OVCRI.

- (6) Construction Method:
Refers to the exterior finish mainly.

<u>Brick</u>		<u>Wood</u>	
Brick - red	BR	Wood Frame	WF
Brick - orange	BO	Wood Frame board & Batten	WFB BT
Brick - yellow	BY	Wood Frame board on board	WFBB
Brick - brown	BB	Wood Frame clapboard	WFCB
Brick - white	BW	Wood Frame vertical plant	WFVP
Brick - veneer	CRBL	Wood Frame shingle	WFSH
Stone	S	Log	L

(7) Listed by: Refers to who originally prepared the inventory

- M = Heritage Markham (Municipality)
- C = C.I.H.B. Canadian Inventory of Heritage Buildings (Federal Government)
- PPL = Project Planning Limited (Consultant)

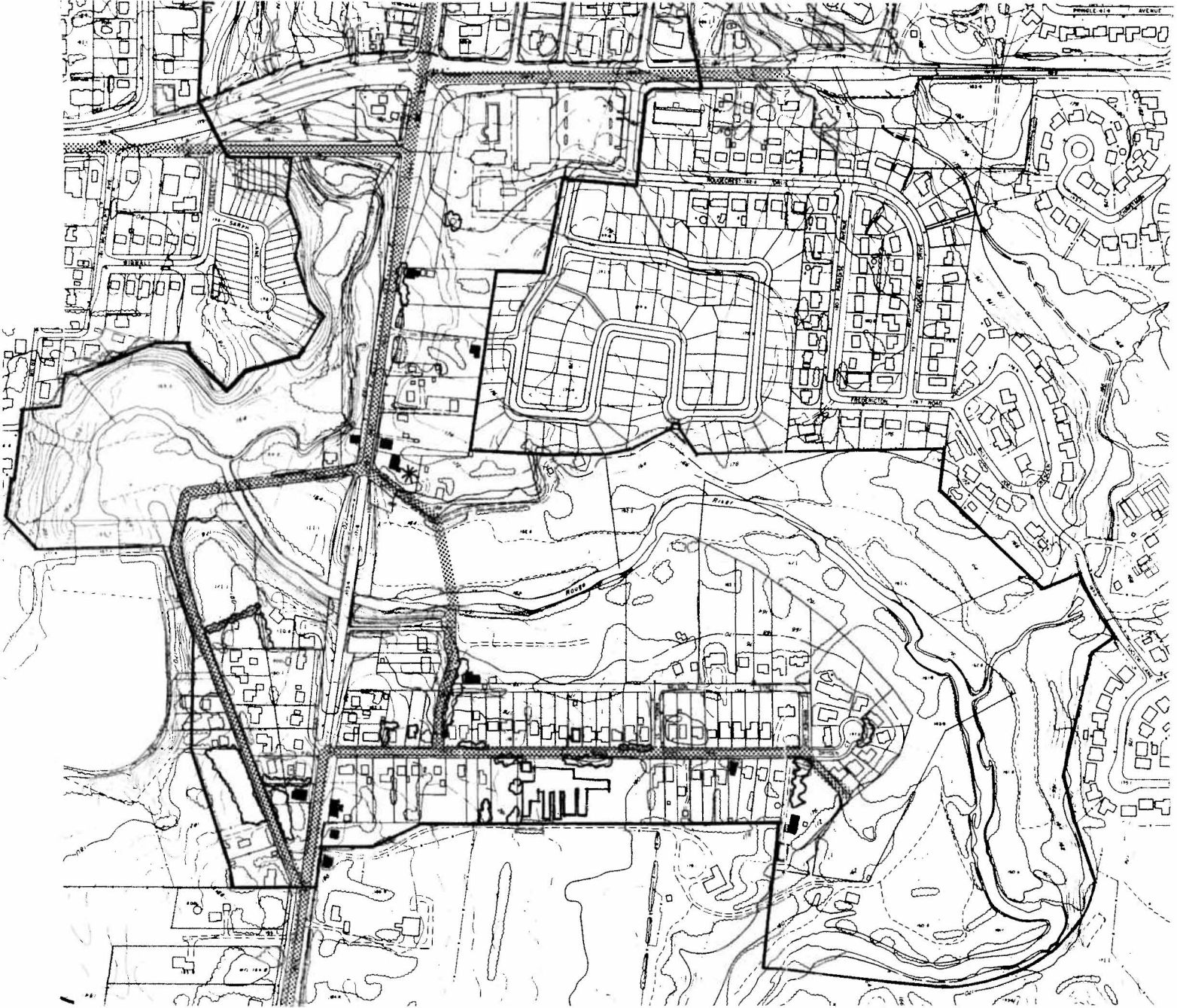
(8) Class: Indicates the classification

- H = buildings designated under Part IV of Ontario Heritage Act.
- A = buildings considered historic
- B = buildings considered compatible
- C = buildings considered incompatible

*See revised Building Classifications
Revised by Council-January 2006
(attached)*

VINEGAR HILL AREA: COMPUTER LIST

INDEX NO (1)	ADDRESS (2)	DATE (3)	BUILDING TYPE (4)	STYLE (5)	CONST. METHOD (6)	LISTED BY (7)	CLASS (8)
607	2 Fisher Ct.	1875 - 1900	C	OV	WFSH	PPL	A
600	027 Main St.	C 1840	H	REM	SWF	PPL	A
601	041 Main St.	C 1890	H	OF	WFS	PPL	A
602	049 Main St.	1850 - 1875	H	GE	BRWF	PPL	A
316	053 Main St.	1829	C	GE	WFCB	M	H
603	088 Main St.	1875 - 1900	C	OV	WFBB	PPL	A
317	089 Main St.	1840	H	OV	BW	M	A
604	091 Main St.	1875 - 1900	H	OF	WFCB	PPL	A
318	093 Main St.	1850 - 1875	H	OV	WFVP	PPL	A
605	084 Mill	1875 - 1900	H	OV	WFS	PPL	A
606	053 Rouge	1875 - 1900	H	OV	WF	PPL	A
364	061 Rouge	1875 - 1900	H	OV	BO	M	A



**THE MARKHAM VILLAGE
HERITAGE CONSERVATION DISTRICT**

**VINEGAR HILL
AREA**

See revised Building Classifications
Revised by Council-January 2006
(attached)

LEGEND

- DISTRICT BOUNDARY —————
- AREA BOUNDARY - - - - -
- DESIGNATED BUILDINGS * ■
- BUILDING TYPE A ■
- BUILDING TYPE B ■
- BUILDING TYPE C ■
- HERITAGE ROADS⁽⁺⁾ [Cross-hatch pattern] (+)
- VEGETATION [Wavy line pattern]

(+) NOT PROPOSED FOR DESIGNATION,
SHOWN PURELY FOR INFORMATION.

NOTE:

THIS BASE MAP WAS DERIVED FROM TOWN
OF MARKHAM TOPOGRAPHIC MAPPING
1:2000

FOR EXACT BOUNDARIES OF HERITAGE
DISTRICT PLEASE REFER TO ORIGINAL
OFFICE MAP 1:2000

**PREPARED FOR
TOWN OF MARKHAM**

SCALE 1:4000

NOVEMBER 1989



MARKHAM VILLAGE AREA: COMPUTER LIST

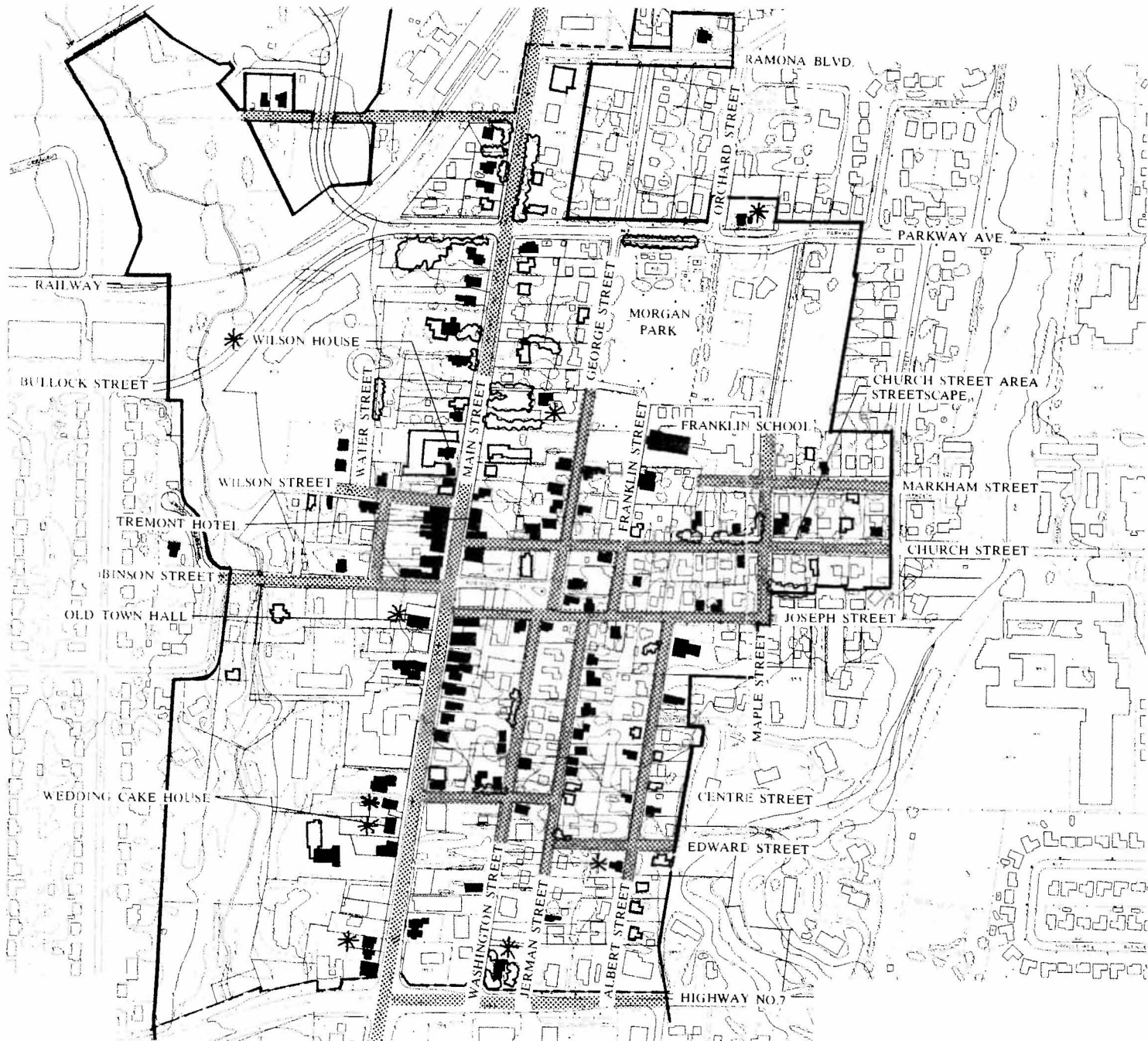
INDEX NO. (1)	ADDRESS (2)	DATE (3)	BUILDING TYPE (4)	STYLE (5)	CONST. METHOD (6)	LISTED BY (7)	CLASS (8)
001	016 Albert	1869 - 1870	H	OV	WFBBT	M	H
003	029 Albert	C 1900	H	OV CR	BO	M	A
004	030 Albert	C 1901	H	OF	BO	M	A
005	040 Albert	mid 1850	C	RE	BR	M+C	A
006	055 Albert	C 1879	S	I	BO	M	A
009	008 Centre	1875 - 1900	H	OF	BO	M	A
010	010-12 Centre	1875 - 1900	H	SE	WFVP	M	A
013	012 Church	1850 - 1875	H	OV CR	WFBB	M	A
014	036 Church	1850 - 1875	H	P	WFBBT	M	A
015	043 Church	1850 - 1875	C	P	WF	M	A
016	044 Church	1875 - 1900	H	OV P	BY/O	M	A
017	048 Church	1875 - 1900	H	OF	BY	M	A
018	052 Church	1875 - 1900	H	OV PCR	B	M	A
019	064 Church	1900 - 1925	H	OV RE	BR	M	A
045	023 Edward	1850 - 1875	C	GE	WFCB	M	A
055	003 Franklin	1850 - 1875	H	OF	WF	M+C	A
056	006 Franklin	1875 - 1900	H	OF	BO/R	M	A
608	015 Franklin	1875 - 1900	H	SE	S	PPL	A
057	021 Franklin	C 1886	S	I	BO	M	A
058	001 George	1850 - 1875	C	GE	WFBBT	M	A
059	005 George	1880 - 1890	H	P	BO	M	A
060	014 George	C 1855	H	OV	WFBBT	M	A
061	015 George	mid 1850	H	OV	WFBBT	M	A
062	016 George	1875 - 1900	H	V HP	BY	M	A
063	019A George	mid 1850	C	RE	BR	M	A
064	020-22 George	1850 - 1875	H	GE	BO/R	M	A
123	002 Houghton	1875 - 1900	H	OV CR	Br/O	M	A
124	007 Jerman	1850 - 1875	H	OV GECR	BR	M+C	A
125	029 Jerman	1850 - 1875	H	OF	WF	M+C	A
126	031 Jerman	1850 - 1875	H	OF	WF	M+C	A
127	035 Jerman	1850 - 1875	C	RE	WF	M+C	A
128	041 Jerman	mid 1850	C	RE	BR	M+C	A
129	045/47 Jerman	1875 - 1900	H	OF D	WFBBT	M+C	A
143	022 Joseph	mid 1850	C	OV	WFBBT	M	A
144	027/029 Joseph	1900 - 1925	H	OF DO	WFS	M	A
145	040 Joseph	mid 1850	C	OV	WFCB	M+C	A
146	042 Joseph	1850 - 1875	H	OF P	WFVP	M+C	A
229	004 Main N.	1875 - 1900	H	SE	BV	M	A
230	008 Main N.	1875 - 1900	H	OV	B	M+C	A

MARKHAM VILLAGE AREA: COMPUTER LIST

INDEX NO. (1)	ADDRESS (2)	DATE (3)	BUILDING TYPE (4)	STYLE (5)	CONST. METHOD (6)	LISTED BY (7)	CLASS (8)	
231	012 Main N.	C	1870	H	V P	WFBBT	M+C	H
232	015 Main N.	1875 - 1900	H	OV P	BY	M	A	
233	019 Main N.	1875 - 1900	H	OV P	BY	M+C	A	
234	032 Main N.	C	1862	R	OV IGO	BR	M+C	A
235	034-36 Main N.	1875 - 1900	L	OV I	BR	M	A	
236	040-44 Main N.	1875 - 1900	H	SE T	BO	M+C	H	
237	048 Main N.	C	1870	H	P	WFBBT	M+C	H
238	051 Main N.	C	1900	H	V L	BY	M+C	A
239	054 Main N.	1875 - 1900	H	QA	BR	M	A	
240	063-65 Main N.	C	1845	H	GE	BR	M+C	A
241	069 Main N.	1860 - 1870	H	OV I	WFVP	M+C	A	
242	071 Main N.	C	1900	H	OV	BR	M	A
243	075 Main N.	1900 - 1925	L	OV	BR	M	A	
244	076 Main N.	1875 - 1900	M	OV I	BY	M+C	A	
245	078 Main N.	1875 - 1900	H	OV	WFS	M+C	A	
246	080 Main N.	1875 - 1900	M	OV	WFCB	M+C	A	
247	081-83 Main N.	1875 - 1900	L	OV	BR	M+C	A	
248	085-87 Main N.	1900 - 1925	L	OV	BR	M	A	
249	091 Main N.	C	1897	L	OV CR	BR	M+C	A
250	096 Main N.	C	1882	O	OV I	BO	M	H
251	097 Main N.	C	1897	L	OV ICR	BR	M+C	A
252	106 Main N.	1875 - 1900	L	OV	BV	M+C	A	
253	112 Main N.	1875 - 1900	M	OV	BV	M	A	
254	114 Main N.	1875 - 1900	M	OV SE	BO/B	M	A	
255	116 Main N.	1875 - 1900	M	OV	BR/BV	M+C	A	
256	117 Main N.	C	1873	M	OV I	BR	M+C	A
257	118 Main N.	C	1890	M	OV	BY	M+C	A
258	120 Main N.	C	1890	M	OV	BR	M+C	A
259	121 Main N.	1875 - 1900	L	OV	WF	M+C	A	
260	122A-122 Main N.	C	1900	M	OV	BR	M+C	A
261	123-131 Main N.	C	1873	T	OV GE	WFBTV	M+C	H
262	124 Main N.	C	1875	L	OV IBA	BO	M+C	A
263	126 Main N.	C	1875	M	OV BA	BO	M+C	A
264	128 Main N.	C	1875	M	OV BA	B	M+C	A
265	135-137 Main N.	1925 - 1950	L	OV	BO	M+C	A	
266	136 Main N.	C	1900	M	OV	BY	M+C	A
267	140 Main N.	C	1845	H	OV RE	BR	M+C	A
268	144 Main N.	C	1866	H	V HP	BY	M+C	H

MARKHAM VILLAGE AREA: COMPUTER LIST

INDEX NO. (1)	ADDRESS (2)	DATE (3)	BUILDING TYPE (4)	STYLE (5)	CONST. METHOD (6)	LISTED BY (7)	CLASS (8)	
271	152 Main N.	C	1872	H	OV	BV	M+C	A
272	159 Main N.	C	1845	H	OV REGEI	BY	M	H
273	162 Main N.	C	1887	H	V HP	BY	M	A
274	166 Main N.	C	1873	H	I	BY	M	A
275	172 Main N.	1875 - 1900	H	OVI	BY	M	A	
276	176 Main N.	1875 - 1900	H	OV	WFBBT	M	A	
277	180 Main N.	1900 - 1925	H	OV	B	M	A	
278	183 Main N.	1875 - 1900	H	V HP	BR	M	A	
281	194 Main N.	1875 - 1900	C	RE	BR	M	A	
282	196 Main N.	1875 - 1900	H	OV	BW	M	A	
283	202 Main N.	C	1871	H	SE	BS	M	A
339	1 Orchard Street		1887	H	OV NC	BR	M+C	H
361	14 Ramona Blvd.	1875 - 1900	H	OV QA	B	M	A	
362	114 Robinson now 4 Homestead Ct.	1850 - 1875	H	OV P	BR	M	A	
363	122-124 Robinson	1875 - 1900	H	OV DO	BY	M	A	
375	026 Station	1850 - 1875	H	OF	WFVP	M	A	
377	028 Station	1850 - 1875	H	OV	WFVP	M	A	
404	010 Washington	1900 - 1925	H	OV	BY	M	A	
405	021 Washington	1900 - 1925	H	OV P	BY	M	A	
406	025-27 Washington	1875 - 1900	H	OV GERE	BO	M+C	A	
407	030 Washington	1875 - 1900	H	OV CRP	WF	M	A	
408	032 Washington	1875 - 1900	C	GE	WF	M+C	A	
409	047 Washington	1875 - 1900	H	OV GERE	BO	M	A	
410	048 Washington	1850 - 1875	H	OV P	WFBBT	M	A	
411	006-08 Water St.	1875 - 1900	H	VL DO	BY	M	A	
414	012 Wilson St.	1875 - 1900	H	OV P	WF	M	A	
415	015-21 Wilson St.	C	1900	H	SEL	B	M	A
416	027 Wilson St.	C	1900	H	OV	WF	M	A
417	028 Wilson St.	C	1900	H	OV	BR	M	A
418	030 Wilson St.	C	1900	H	OV	B	M	A
413	6040 Hwy #7	C	1886	H	V	BY	M	H



**THE MARKHAM VILLAGE
HERITAGE CONSERVATION DISTRICT**

**MARKHAM VILLAGE
AREA**

See revised Building Classifications
Revised by Council-January 2006
(attached)

LEGEND

- DISTRICT BOUNDARY
- AREA BOUNDARY
- DESIGNATED BUILDINGS
- BUILDING TYPE A
- BUILDING TYPE B
- BUILDING TYPE C
- HERITAGE ROADS(+) (+)
- VEGETATION

(+) NOT PROPOSED FOR DESIGNATION,
SHOWN PURELY FOR INFORMATION.

NOTE:

THIS BASE MAP WAS DERIVED FROM TOWN
OF MARKHAM TOPOGRAPHIC MAPPING
1:2000.

FOR EXACT BOUNDARIES OF HERITAGE
DISTRICT PLEASE REFER TO ORIGINAL
OFFICE MAP 1:2000.

PREPARED FOR
TOWN OF MARKHAM



SCALE 1:4000

NOVEMBER 1989



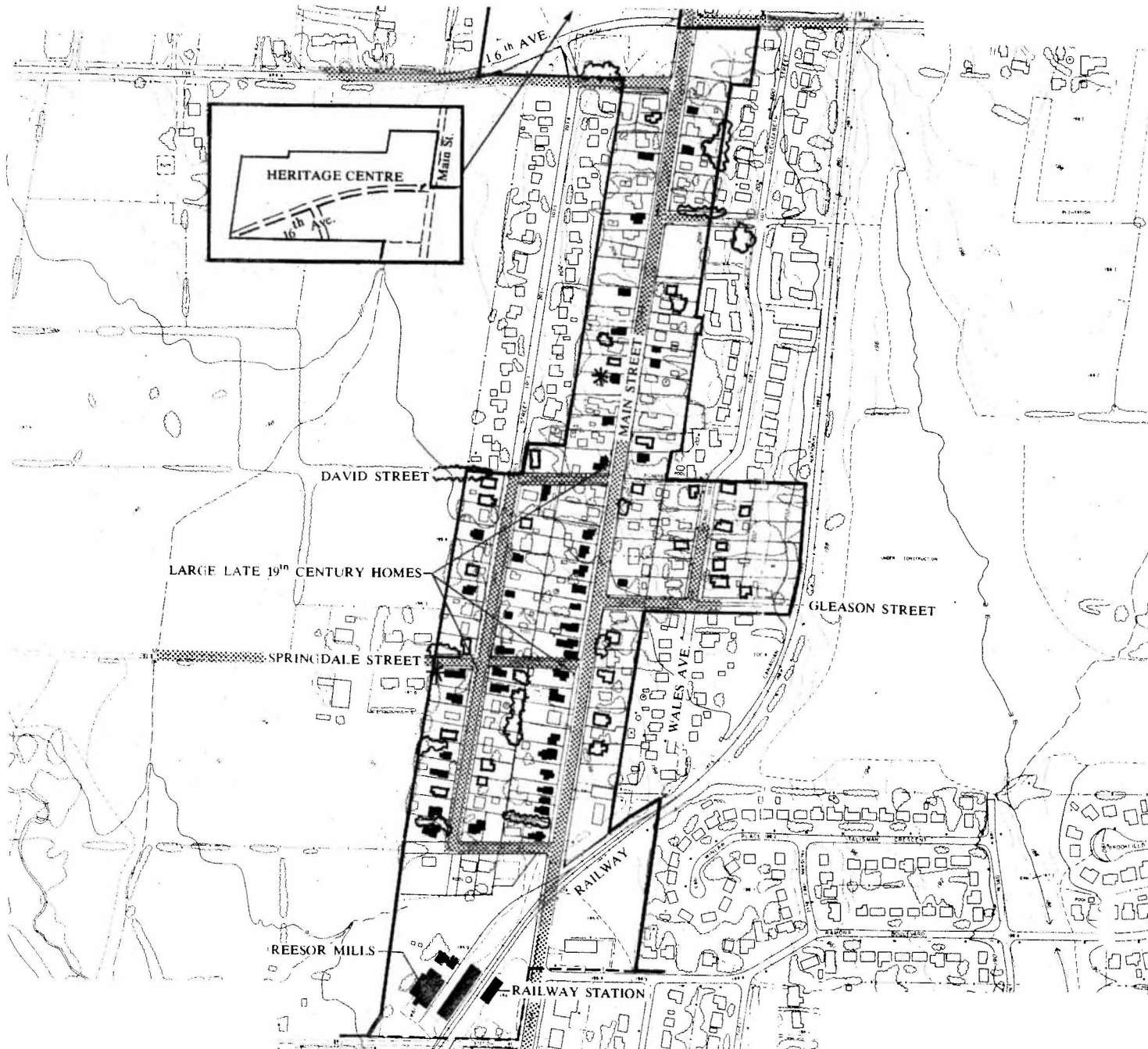
MOUNT JOY AREA: COMPUTER LIST

INDEX NO. (1)	ADDRESS (2)	DATE (3)	BUILDING TYPE (4)	STYLE (5)	CONST. METHOD (6)	LISTED BY (7)	CLASS (8)
030	012 David St.	1875 - 1900	H	OV	WFBB	M	A
374	214 Main St. N.	C 1871	W	OV	WF	M	H
284	230 Main St. N.	C 1900	H	OV VL	BY	M	A
285	236 Main St. N.	C 1900	H	OV PCR	BO	M	A
286	238 Main St. N.	C 1900	H	OV CR	CRBL	M	A
287	240 Main St. N.	C 1900	H	OV CR	BV	M	A
288	244 Main St. N.	C 1900	H	V HP	BO/R	M	A
289	248 Main St. N.	1900 - 1920	H	OV	BR	M	A
290	250 Main St. N.	C 1900	H	OV VL	WFVP	M	A
291	258 Main St. N.	C 1900	H	V HP	BO/B	M	A
292	262 Main St. N.	1875 - 1900	H	OV OFCR	BO/B	M	A
293	266 Main St. N.	C 1892	L	OV BF	WFCBVP	M+C	H
294	268 Main St. N.	1875 - 1900	H	OV P	BO/B	M	A
295	272 Main St. N.	1875 - 1900	H	OF	BW	M	A
296	276 Main St. N.	C 1900	H	OV CRP	BW	M	A
297	280 Main St. N.	1875 - 1900	H	OF PI	BR	M	A
298	284 Main St. N.	1875 - 1900	H	OV I	BO/B	M	A
299	288 Main St. N.	1900 - 1925	H	OV	BR	M	A
300	292 Main St. N.	1875 - 1900	H	OV	BV	M	A
301	304 Main St. N.	C 1848	H	GE	?	M	A
302	307 Main St. N.	C 1900	H	OV VL	BR	M	A
303	314 Main St. N.	C 1900	H	OV GEI	BO	M	A
304	322 Main St. N.	C 1877	H	OF P	WFVP	M+C	H
305	327 Main St. N.	1875 - 1900	H	OF	WF	M	A
306	329 Main St. N.	1875 - 1900	H	OV CR	WF	M	A
307	332 Main St. N.	C 1882	H	OV CR	BO	M+C	A
308	340 Main St. N.	1900 - 1925	H	OV	BR	M	A
309	354 Main St. N.	C 1900	H	OV	BY	M	A
310	355 Main St. N.	1820 - 1850	C	GE	WFVP	M	A
311	357 Main St. N.	1875 - 1900	H	OF	WF	M	A
312	361 Main St. N.	1875 - 1900	H	OF	WF	M	A
313	362 Main St. N.	1875 - 1900	H	OV PCR	BO	M	A
314	365 Main St. N.	1875 - 1900	H	OF	WF	M	A
315	373 Main St. N.	1875 - 1900	H	OF	WFS	M	A
346	001 Peter St.	1900 - 1925	H	V HP	BR	M	A
347	002 Peter St.	1880 - 1890	H	V HP	B	M	A
348	004 Peter St.	1875 - 1900	H	OV	B	M	A
349	008 Peter St.	1900 - 1925	H	OV	B	M	A
350	010 Peter St.	1875 - 1900	H	OV P	BO	M	A

See revised Building Classifications
Revised by Council-January 2006
(attached)

MOUNT JOY AREA: COMPUTER LIST

INDEX NO. (1)	ADDRESS (2)	DATE (3)	BUILDING TYPE (4)	STYLE (5)	CONST. METHOD (6)	LISTED BY (7)	CLASS (8)	
351	016 Peter St.	C	1900	H	V L	BR	M	A
352	017 Peter St.	1875 -	1900	H	OF	BY	M	A
353	019 Peter St.	1875 -	1900	H	OF	BR	M	A
354	020 Peter St.	C	1895	H	P	WF	M	H
355	023 Peter St.	1875 -	1900	H	OF	BO/Y	M	A
356	027 Peter St.	1875 -	1900	H	OV	B	M	A
357	029 Peter St.	1900 -	1925	H	V L	BR	M	A
358	030 Peter St.	1875 -	1900	H	OV	WFVP	M	A
359	033 Peter St.	1875 -	1900	H	OF	BR	M	A
360	036 Peter St.	1900 -	1925	H	OV QA	B	M	A
373	014 Station St.		1929	I	OV	BY	M	A



**THE MARKHAM VILLAGE
HERITAGE CONSERVATION DISTRICT**

**MOUNT JOY
AREA**

See revised Building Classifications
Revised by Council January 2006
(attached)

LEGEND

- DISTRICT BOUNDARY ———
- AREA BOUNDARY - - - - -
- DESIGNATED BUILDINGS * ■
- BUILDING TYPE A ■
- BUILDING TYPE B ■
- BUILDING TYPE C ■
- HERITAGE ROADS⁽⁺⁾ [Cross-hatched pattern]
- VEGETATION [Cloud-like pattern]

*(+) NOT PROPOSED FOR DESIGNATION,
SHOWN PURELY FOR INFORMATION.*

NOTE:

THIS BASE MAP WAS DERIVED FROM TOWN
OF MARKHAM TOPOGRAPHIC MAPPING
1:2000

FOR EXACT BOUNDARIES OF HERITAGE
DISTRICT PLEASE REFER TO ORIGINAL
OFFICE MAP 1:2000

**PREPARED FOR
TOWN OF MARKHAM**

SCALE 1:4000

NOVEMBER 1989

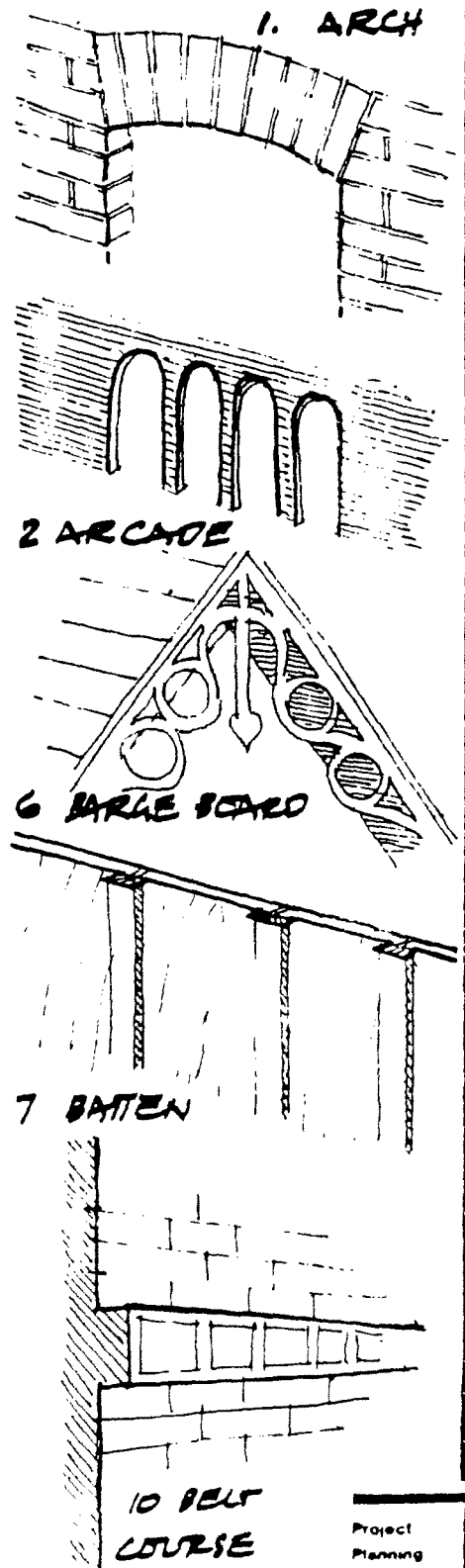


APPENDIX II

GLOSSARY OF TERMS

GLOSSARY OF TERMS

1. **ARCH:**
A structural method of spanning an opening, usually rounded, and often made from brick or stone.
2. **ARCADE:**
Series of arches
3. **ASHLAR:**
Squared, hewn stone.
4. **BALANCE:**
The appearance or state of being equal and stable. In architecture, balance is frequently achieved by the use of symmetry and repetition. Balance in the design of the facades may be simple, complex, symmetrical or asymmetrical.
5. **BALUSTER:**
Upright supports of the handrail; in a group known as balustrade, (see illus. 52).
6. **BARGEBOARD:**
The point, a board, or series of laminated boards that are often decorative covering the projecting rafter of the gable end of a roof. Also known as vergeboard.
7. **BATTEN:**
A narrow strip of wood frequently used to cover a seam.
8. **BATTER:**
Receding, upward slope on a retaining wall.
9. **BAY WINDOW:**
An angular glazed projection. If the projection is curved, it is known as a bow window. If it is on an upper floor only it is called an oriel window.
10. **BELT COURSE:**
A continuous horizontal band, either plain or ornate, which projects from the surface of an exterior wall separating two storeys.



11. BOND:

The method of overlapping the joints of successive courses of brick or stone, binding them together to form a wall or other surface. Different patterns may be formed; i.e., running bond, Flemish bond, and English bond.

12. BOOMTOWN:

Front masking a roof line.

13. BRACKET:

A supporting piece of wood, or stone or other material, often formed in scrolls or volutes to carry a projecting weight, such as a cornice, eave, lintel or sill.

14. BRICK PAVER:

Dense bricks manufactured to pave streets, walkways, patios, driveways, etc.

15. BUTTRESS:

A projection of masonry or other material built against the wall to give additional strength.

16. CANOPY:

A sheltered projection over a door or window.

17. CANTILEVER:

A horizontal projection, eg., a step, balcony, beam or canopy, without visible means of support or bracing.

18. CAPITAL:

The top or crowning feature of a column casement window.

19. CASEMENT WINDOW:

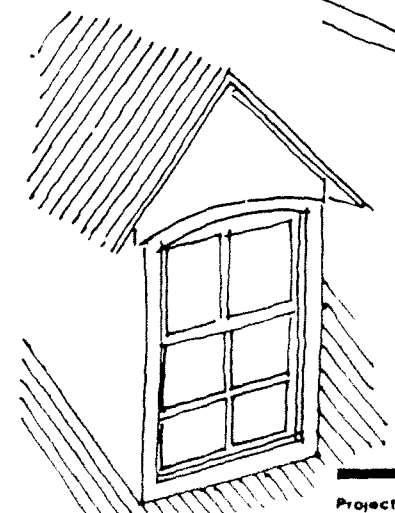
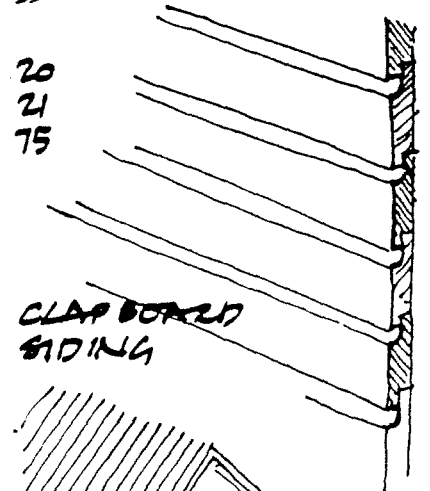
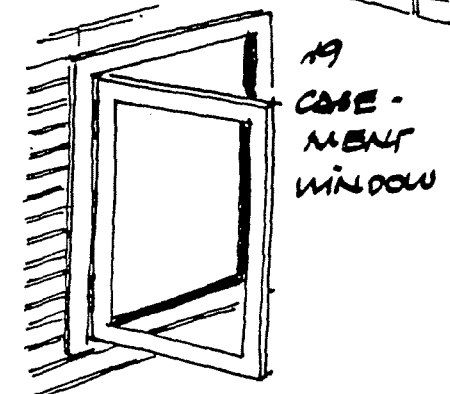
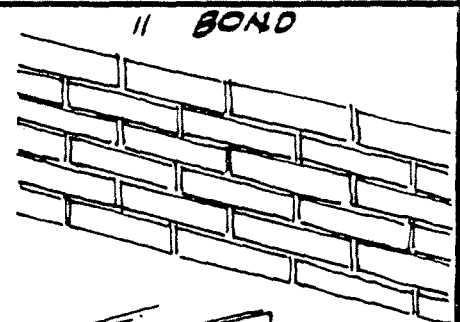
A window opening outward on side hinges.

20. CLADDING:

A protective surfacing material, i.e., wood and aluminum.

21. CLAPBOARD:

Overlapping horizontal boards, usually 4-6" deep, covering a wood framed wall; the boards are wedge-shaped section.



34 CORNER

Project
Planning
Limited

22. CLERESTORY:

An upper section of wall pierced by windows to provide natural daylighting.

23. COLOUR:

Colour has three basic characteristics: hue, value, and intensity. Hue is the name of the colour, or the actual light wave length. Value refers to the lightness or darkness of a colour. Intensity refers to the vividness or purity of the colour.

24. COLUMN:

A supporting pillar, traditionally consisting of a base, shaft, and capital.

25. CORBEL:

A bracket or decorative detail formed by extending successive courses of brick outward so that they project from the wall surface.

26. CORNERSTONE:

Cut stone or other material placed at the corner and base of a building, with its date of construction.

27. CORNICE:

It is the top projecting section of an entablature. It is also any projecting moulding along the top of a building, finishing or crowning it.

28. COURSE:

A single line of material, e.g. bricks, stone, block.

29. CRENELLATED:

(wall) with indented or notched breaks in the top.

30. CRESTING:

A decorative ridge or railing on the top of a roof or a wall.

31. CUPOLA:

A circular or polygonal lantern situated on a dome, usually at the top of a building. It is also known as a belvedere.

32. DENTIL:

A series of small rectangular blocks or teeth applied as an ornament in a cornice or belt course.

33. DOME:

A vault of even curvature. It may be segmental, semi-circular, pointed, or bulbous.

34. DORMER:

A structure that projects from the slope of a roof. An eye-lid dormer resembles the shape of the human eye.

35. DOUBLE HUNG WINDOW:

A window consisting of two sashes which move vertically. Traditionally hung with lines, weights, and pulleys.

36. DROP:

Decoration hanging from a roof edge or gable end.

37. EAVE:

The edge and underpart of a roof that projects over an outside wall.

38. ELEVATION:

The external face of a building; also a two-dimensional drawing.

39. ENTABLATURE:

Classical architecture.

40. FACADE:

The face of front of a building.

41. FANLIGHT:

A semi-circular window with radiating glazing bars, suggesting a fan.

42. FASCIA BOARD:

A horizontal band or member covering the projecting rafters of an overhanging eave.

43. FENESTRATION:

The arrangement of windows in a building.

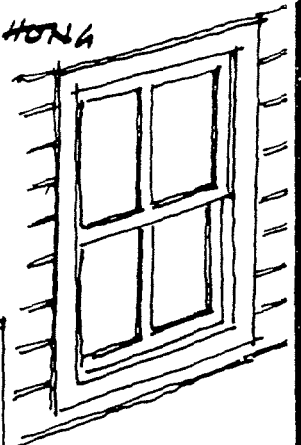
44. FINIAL:

An ornament at the top of a roof, canopy, gable, or pinnacle.

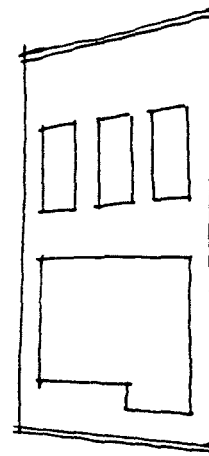
DOUBLE HUNG

WINDOW

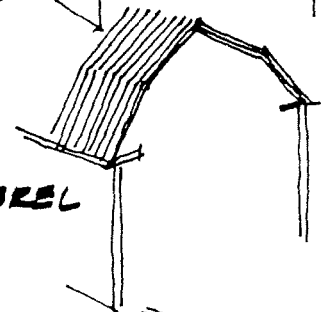
35



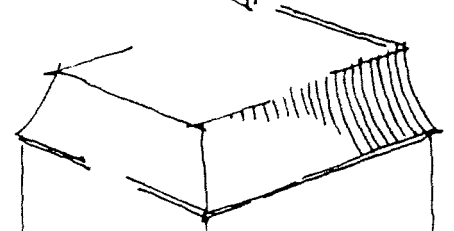
40 FACADE



48
GABLE
ROOF



49
GAMBREL
ROOF



MANSARD ROOF

45. FLASHING:

Material used to make a weather-tight joint between two materials or surfaces to prevent water penetration and to drain and direct any water that might enter back out.

46. FRIEZE:

An ornamental band on a building, frequently on an upper section of wall.

47. FURRING:

The extension of a surface outward, usually with spaces of wood or metal. Used often to level surfaces.

48. GABLE:

The vertical end of a building from the eaves to the ridge.

49. GAMBREL ROOF:

Gable roof with double pitch or two slopes on each of two sides.

50. GINGERBREAD:

Decorative, wooden trim.

51. GROUT or GROUTING:

The mortar used to bind brick or masonry together.

52. HIP:

The external angle formed by the intersection of two sloping sides of a roof over walls running in different directions.

53. JAMBS:

The vertical sides of an opening.

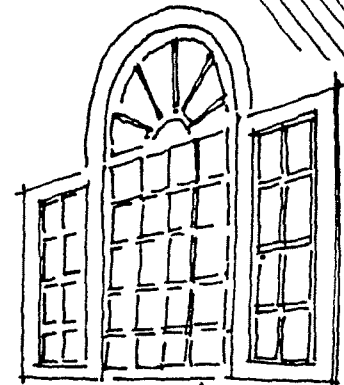
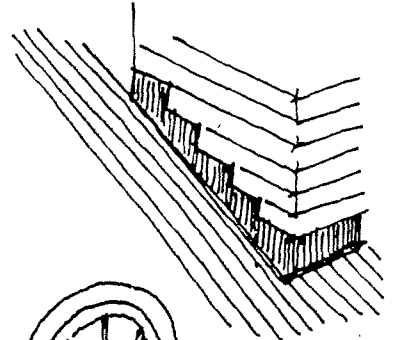
54. MOULDING:

Projecting detail used for decorative purposes.

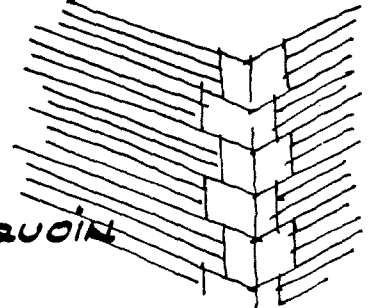
55. MULLION:

A vertical member dividing a window or other opening into two or more lights.

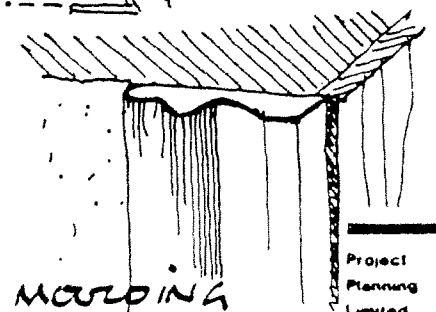
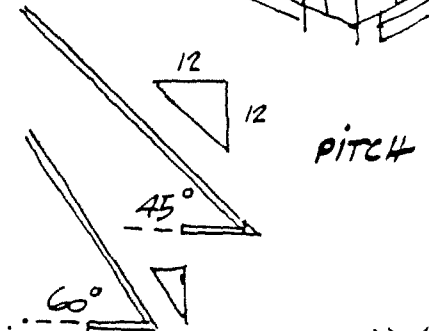
45 FLASHING



PALLADIAN WINDOW



67 QUOIN



56. MUNTIN:

A small slender member, traditionally wood or metal, which separates the panes of glass in a window. Known also as a glazing bar.

57. OCULUS WINDOW:

Circular window.

58. ORNAMENT:

Any detail that is added to a building for decoration.

59. PALADIAN WINDOW:

A window with three openings, the central one being arched and wider than the others.

60. PARAPET:

A wall projecting above the height of the roof.

61. PEDIMENT:

The triangular area formed by a roof gable over a dormer, a window, a doorway, or facade.

62. PILASTER:

A vertical, flat or rounded pillar projecting only slightly from a wall.

63. PINNACLE:

A pointed ornament found at the top of a tower or roof.

64. PITCH:

The incline or rise of a roof.

65. PORCH:

A covered entrance to a building; if columned and pedimented like a temple front, it is referred to as a portico.

66. PRESERVATION:

Maintaining a structure in its existing form, by preventing further change or deterioration.

67. QUOIN:

Dressed stone or projecting brick at the corner of buildings, usually laid so that they are alternately large and small to articulate the corners of a building.

68. RECONSTRUCTION:

Recreation of a building from historical, archaeological, and architectural documents, as well as other evidence.

69. RENOVATION:

Any alteration in structure or detail to accommodate changes in use, function, style, or performance.

70. RESTORATION:

Making selected changes to a building to return it to some specific date.

71. RETURN:

Continuation of a moulding at a right angle on an adjacent surface.

72. RIDGE:

The horizontal or incline line defining the high point created by the junction of two sloping roof surfaces.

73. SETBACK:

The distance between a building and its property line.

74. SHEATHING:

Exterior cladding of a building.

75. SIDING:

A material used for surfacing a framed building; traditionally horizontal boards or shingles. Also cladding.

76. SILL:

The sloping horizontal surface on which a window or door frame rests.

77. SLOPE:

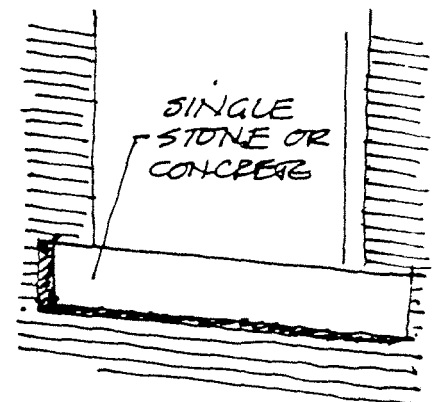
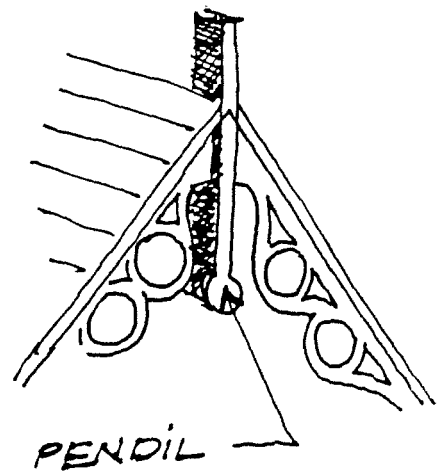
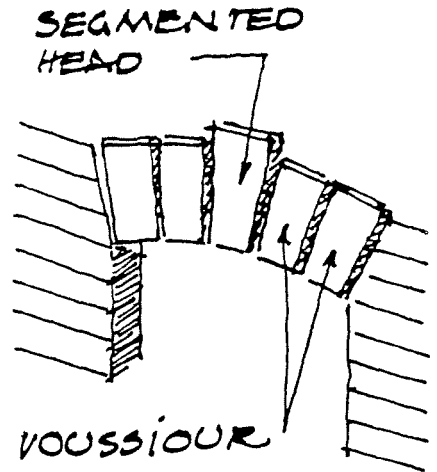
The incline of a roof, usually expressed in ratio of vertical rise to horizontal run.

78. SOFFIT:

The underside of any projecting architectural element.

79. TRANSOM:

An opening over a door or large window for ventilation.



80. TREFOIL:

A decorative Gothic pattern of three parts resembling a trillium.

81. TREILLAGE:

Decorative trim, primarily of wood.

82. TURRET:

A small, slender tower.

83. VALLEY:

The internal angle formed by the junction of two inclined roof surfaces.

84. VENEER:

A thin layer of facing material.

85. VERANDAH:

An open gallery, porch, or balcony covered by a roof.

86. VESTIBULE:

An anti-hall, lobby or porch.

87. WINDOW SASH:

The frame in which the pane of a window is set.